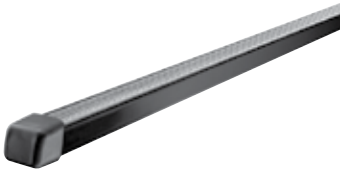




	FOR VEHICLES WITH RAISED SIDE RAILS		FOR VEHICLES WITHOUT ANY ROOF RACK	
FOOT PACK				
NAME	Crossroad™ 450 – 4 feet per pack Crossroad™ 4502 – 2 feet per pack	AeroBlade™ Crossroad™ 450R – 4 feet per pack	Traverse™ 480 – 4 feet per pack Traverse™ 4802 – 2 feet per pack	AeroBlade™ Traverse™ 480R – 4 feet per pack
LOCKS	544 (sold separately)	544 (sold separately)	544 (sold separately)	544 (sold separately)
FIT KIT NEEDED*	No	No	Yes (sold separately)	Yes (sold separately)
BARS	Square (sold separately)	AeroBlade™ (sold separately)	Square (sold separately)	AeroBlade™ (sold separately)
MISC.	Improves the versatility of your vehicles existing factory rails and provides a firm platform for all your gear. Quick and easy foot and bar removal.		Provides the strongest, best fitting rack solution for your vehicle. The Thule Fit Kit provides the most custom fit available.	

LOAD BARS



SQUARE LOAD BARS

- Part No. LB50—50"
- Part No. LB58—58"
- Part No. LB65—65"
- Part No. LB78—78"

Heavy-duty, galvanized and plastic-coated square steel load bars are available in a variety of lengths and deliver maximum load-carrying capacity.



AEROBLADE™ LOAD BARS

- Part No. ARB43—43"
- Part No. ARB47—47"
- Part No. ARB53—53"
- Part No. ARB60—60"

Premium, silent, ultra lightweight aluminum load bars for use with the Thule Rapid roof rack systems.



One-Key™ Lock Cylinders 512, 544, 596, 588

Lock cylinders fit Thule accessories and rack feet.

- One number-coded key fits multiple locks
- Sold in 2 (#512), 4 (#544), 6 (#596) and 8 (#588) cylinder sets

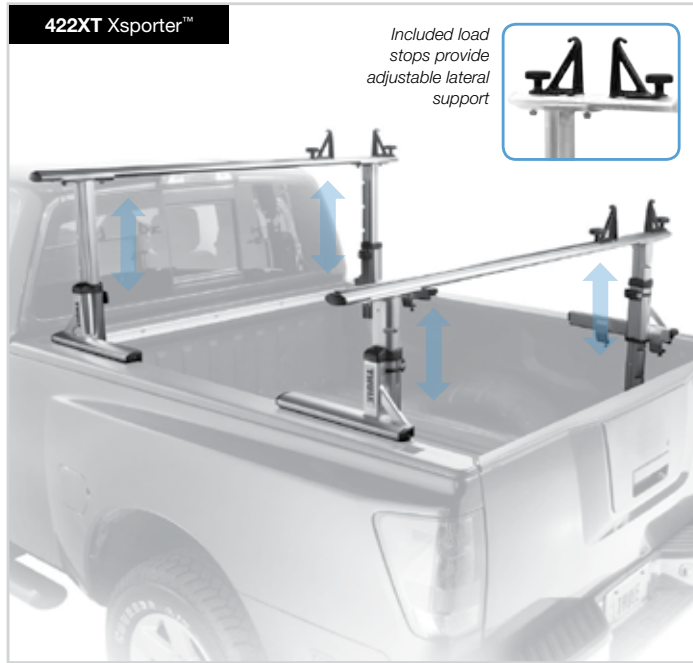


Step-Up™ Wheel Step 232

Get that extra height to reach the top of your vehicle by simply stepping on your tire.

- Made from heavy-duty steel, the Step-Up Wheel Step attaches to most vehicle tires
- Folds flat when not in use for easy storage
- Includes storage bag

*Note: See Thule Fit Guide for vehicle fit recommendations, or visit thule.com.



PICK-UP TRUCK RACK SYSTEM

422XT Xsporter™ Multi-Height Aluminum Truck Rack

Provides maximum loading flexibility, superior carrying capability and sleek, stylish appearance through its patented HeightAdjust™ load bars, 6000 grade aluminum design and dual-slot reinforced bars.

- HeightAdjust™ load bars can be raised or lowered to 5 different heights for convenient loading, carrying and unloading
- 6000 grade aluminum design provides strength to carry up to 450 pounds* and resists rusting for a lifetime of reliable operation and great looks
- Adjustable load stops slide across each load bar for safe and secure attachment of equipment and materials
- Quick and easy installation requires no cutting or drilling and only limited assembly
- 4 One-Key™ lock cylinders included to secure rack to vehicle
- Compatible with most Thule accessories; may require Xadapt™ adapter (sold separately)
- Adapters available for the newest pick-up trucks equipped with bed track systems:

XK1 – adapts to 2005- Toyota Tacoma

XK2 – adapts to 2007- Toyota Tundra with bed track system

* Load capacity SHOULD NOT exceed the vehicle manufacturer's cargo and/or entire vehicle capacity weight rating. Consult vehicle manufacturer for capacity ratings.



PICK-UP TAILGATE BIKE CARRIER

Gate Mate™ Padded Tailgate Bike Carrier

824 Gate Mate™ 62" – For full size truck

823 Gate Mate™ 54" – For compact and mid size truck

- Integrated Knock-Blocks™ prevent bikes from sliding off edge of tailgate causing damage to the vehicle and or bike.
- Handle Hood™ allows for convenient access to tailgate handle without pad removal.
- Ultra durable heavy duty vinyl with foam padding protects both bike and truck tailgate.
- Strap anchors provide secure tie down points for bikes and other loads.
- Sturdy nylon straps provide secure tie down points to keep pad securely attached to tailgate

Thule Transport

Whether you're traveling around town or to your next adventure, Thule Transport provides innovative organization options for instant access to the gear you need in your vehicle.

For more details and to see the full assortment of available products, visit thule.com





688XT Atlantis™ 2100



Dual-side Opening



Quick-Grip™ Mounting

ATLANTIS™ CARGO BOXES

Premium series offered in four sizes and two color options to complement your vehicle while adding up to 21 cubic feet of cargo space.

- Dual-side Opening
- Quick-Grip™ mounting hardware
- High-gloss automotive finish, available in metallic silver and black
- Fits most factory and aftermarket racks

PART # / NAME	CAPACITY	SIZE
685XT/685BXT Atlantis™ 1200	12 cu. ft.	81.5"(L) x 17"(H) x 24.5"(W)
686XT/686BXT Atlantis™ 1600	16 cu. ft.	74"(L) x 16.3"(H) x 36"(W)
687XT/687BXT Atlantis™ 1800	18 cu. ft.	84"(L) x 16.9"(H) x 34.4"(W)
688XT/688BXT Atlantis™ 2100	21 cu. ft.	92.5"(L) x 18"(H) x 36"(W)



602 Ascent™ 1100



Dual-side Opening



Quick-Grip™ Mounting

ASCENT™ CARGO BOXES

Available in four sizes, the well-equipped Ascent is designed to fit today's most popular vehicles.

- Dual-side Opening
- Quick-Grip™ mounting hardware
- Black finish complements any car
- Fits most factory and aftermarket racks

PART # / NAME	CAPACITY	SIZE
602 Ascent™ 1100	11 cu. ft.	88.5"(L) x 12.4"(H) x 28.5"(W)
603 Ascent™ 1500	15 cu. ft.	66.9"(L) x 16"(H) x 35.1"(W)
604 Ascent™ 1600	16 cu. ft.	76"(L) x 16.4"(H) x 33.1"(W)
605 Ascent™ 1700	17 cu. ft.	91.5"(L) x 15.7"(H) x 31.5"(W)



668ES Frontier™



Easy-Snap™ Mounting

TIME TRAVEL™ CARGO BOXES

Available in 3 models, this standard cargo box carrier offers a variety of sizes at a great value.

- Easy-Snap™ mounting hardware
- Black finish complements any car
- Fits most factory and aftermarket racks

PART # / NAME	CAPACITY	SIZE
667ES Excursion™	13 cu. ft.	55.5"(L) x 18.2"(H) x 35.2"(W)
668ES Frontier™	11 cu. ft.	88.5"(L) x 15.7"(H) x 21.2"(W)
669ES Mountaineer™	17 cu. ft.	91.5"(L) x 16.6"(H) x 28.2"(W)



NEW

Universal Pull Top™ 92726

The easiest loading and unloading snowsport carrier just got easier with the integration of Thule Speed-Link™ Technology and increased carrying capacity.

- Equipped with new Speed-Link™ mounting system for convenient, tool-free mounting to Thule rack systems, round bars and most factory racks
- Now carrier has a 30"-wide loading platform that holds 6 pair of fat skis or 4 snowboards
- Telescoping arms allow you to load your skis/boards from the side of the vehicle
- Skis and boards are held with ultra-soft rubber arms that grip without scratching surfaces
- Easy to open and close while wearing gloves with the oversized push button release
- 4 One-Key™ locks included to lock skis and boards in the carrier and carrier to vehicle



Speed-Link™ mounting system allows for tool-free installation on most vehicles.



Telescoping Arms allow you to load your skis/boards from the side of the vehicle.



NEW

Universal Flat Top™ 92724, 92725

The fully locking ski carrier now comes with Thule Speed-Link™ Technology and increased carrying capacity.

- Equipped with new Speed-Link™ mounting system for convenient, tool-free mounting to Thule rack systems, round bars and most factory racks
- Increased carrying capacity:
 - 92724 carrier has a 23"-wide loading platform that holds 4 pair of fat skis or 2 snowboards
 - 92725 carrier has a 30"-wide loading platform that holds 6 pair of fat skis or 4 snowboards
- Skis and boards are held with ultra-soft rubber arms that grip without scratching surfaces
- Easy to open and close while wearing gloves with the oversized push button release
- 4 One-Key™ locks included to lock skis and boards in the carrier and carrier to vehicle



Speed-Link™ mounting system allows for tool-free installation on most vehicles.



Ultra Soft Rubber Arms grip skis/boards without scratching the surfaces.

575 Universal Snowboard Carrier™



UNIVERSAL SNOWBOARD CARRIER

This fully locking snowboard carrier can transport 2 boards safely, securely and uses minimum roof space so there is room for other carriers.

- Adjusts to fit all board sizes and widths.
- Includes factory rack mounts, carrier and locks.

513 Domestique™



594XT Sidearm™



BIKE ROOF CARRIERS

Thule's bicycle carriers give you the confidence to carry your bikes, while protecting your car from scratches.

PART # / NAME	MOUNT TYPE	FACTORY RACK COMPATIBLE	THULE RACK COMPATIBLE	ROUND BAR COMPATIBLE
513 Domestique	Fork Mounted	Yes	Yes	Yes
594XT Sidearm	Upright	Yes	Yes	Yes

835PRO Hull-a-Port PRO™



883 Glide and Set™



WATERSPORT ROOF CARRIERS

Thule's watersport carriers provide the best carrying options for your kayak or canoe. Thule carriers include heavy-duty straps, Buckle Bumper™ to protect your car from scratches and tie-downs to secure your vehicle.

PART # / NAME	FACTORY RACK COMPATIBLE	THULE RACK COMPATIBLE	ROUND BAR COMPATIBLE
835PRO Hull-a-Port PRO	Yes	Yes	Yes
883 Glide and Set	Yes	Yes	Yes
579XT Canoe Carrier	No	Square Bars Only	No



916XTR T2™



990XT Doubletrack™



9031 Vertex™ Swing

NEW



9025 Apex™

NEW



9029 Vertex™

NEW



987XT Hitch Ski Carrier™



665C Transporter Combi™



Snug-Tite™
Receiver Lock STL2

Includes 1 One-Key™
lock cylinder



997 Goalpost™

HITCH BIKE CARRIERS

Thule hitch carriers provide the most options to get your bikes on the road. From our premium T2 carriers, to our value packed Parkway series, Thule hitch carriers feature heavy-duty construction, easy-to-use features and a lifetime warranty.

PART #	BIKE CAPACITY	REAR OF VEHICLE ACCESS	ARMS FOLD FOR STORAGE	INCLUDES BIKE LOCK
T2 Series – Premium carrier with loading in 10 seconds or less				
916XTR (2")	2	Loaded Tilt Down	Yes	Yes
918XTR (2")	4 <small>(use with 916XTR)</small>	Loaded Tilt Down	Yes	Yes
Doubletrack – Transport two bikes regardless of frame design, suspension or wheel size				
990XT (1¼ or 2")	2	Platform	Yes	No
Apex – Fold down and swing carriers with all locks included				
9025 (1¼ or 2")	4	Tilt Down	Yes	Yes
9026 (2")	5	Tilt Down	Yes	Yes
9027 (2")	4	Loaded Swing Away	Yes	Yes
Vertex – Fold down and swing carriers				
9029 (1¼ or 2")	4	Tilt Down	Yes	No
9028 (1¼ or 2")	2	Tilt Down	Yes	No
9030 (2")	5	Tilt Down	Yes	No
9031 (2")	4	Loaded Swing Away	Yes	Yes
Roadway Series – Rear of vehicle access				
956 (2")	4	Tilt Down	No	No
957 (1¼")	4	Tilt Down	No	No
958 (2")	2	Tilt Down	No	No

HITCH SKI CARRIER™

Transport your boards or skis on the back of your vehicle by attaching the Thule Hitch Ski Carrier to your existing Thule hitch or spare tire carrier (sold separately).

PART # / NAME	CAPACITY
987XT Hitch Ski Carrier	Fits 6 pair skis or 4 snowboards

HITCH CARGO CARRIER

Utilize your receiver hitch to store all your extra gear. The Transporter Combi™ offer 13 cu. ft. of cargo capacity, impact and UV resistant ABS construction and Thule One-Key™ lock.

PART # / NAME	BASE	COLOR	RECEIVER
665C Transporter Combi	Fold Down	Matte Black	2" or 1¼"

GOALPOST™

Designed for pick-up trucks, this adjustable watersport carrier allows you to hold different sized kayaks, canoes, paddleboards and sailboards; even extra long loads.

- 58" Thule steel load bar with durable plastic coating
- 2 load stops to help stabilize and hold load

PART # / NAME	BASE	RECEIVER
997 Goalpost	Height adjustable load bar	2"